



960 WEST LEVOY

For Lease > Office

Lease Rate:

\$18.50 -
\$21.50 PSF, FS

Contact us:

Rusty Lugo

+1 801 947 8377

rusty.lugo@colliers.com



James Burgess

+1 801 262 3660

james@theburgessco.com

Colliers International

6440 S Millrock Dr. | Suite 500

Salt Lake City, UT 84121

Main: +1 801 947 8300

colliers.com

Sorenson Research Park I

960 West Levoy Drive
Salt Lake City, Utah

Property Highlights

- Asking Lease Rate: \$18.50 to \$21.50 PSF, Full Service
- Suite 100 - 9,530 RSF
- Suite 200 - 3,924 RSF (Sublease)
- Suite 230 - 1,135 RSF
- Parking ratio: Up to 4.0/1,000 RSF
- Below market average load factor provides higher usable square feet to rentable square feet ratio
- Building is served by a dock high loading door
- Beautiful manicured grounds/ landscaping
- Internet Service Provider



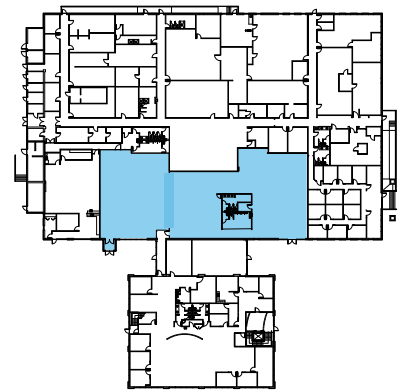
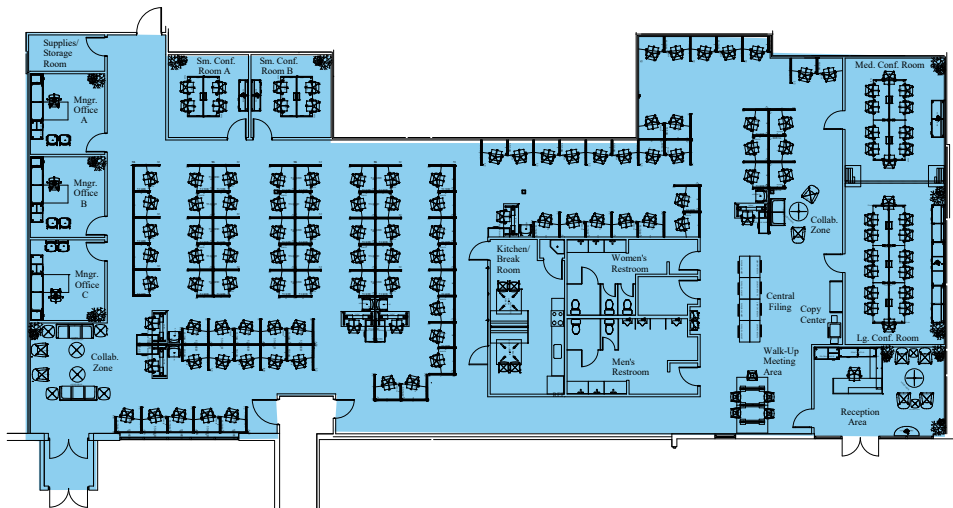
CenturyLink

- Easy access off of 4500 S I-15 exit, excellent access to I-215
- Centrally located to labor force along the Wasatch Front

Floor Plans

First Floor

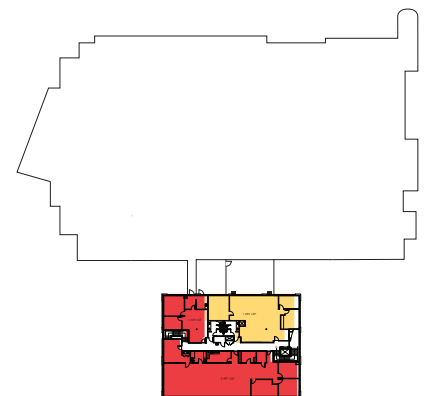
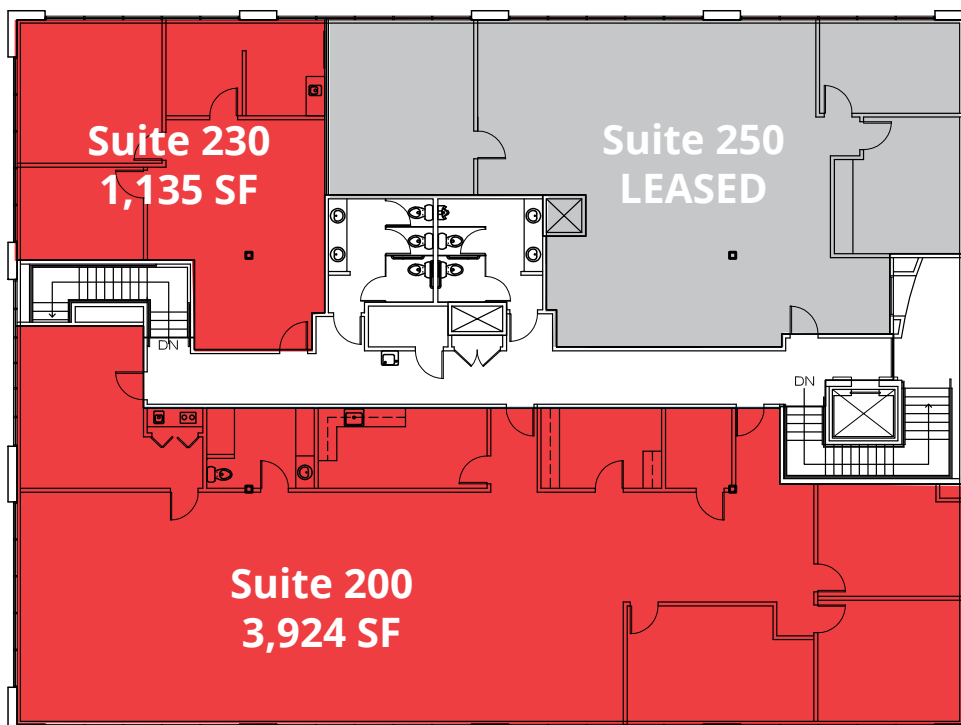
Single Tenant Scenario, Space Available - 9,530 SF



1st Floor Location

Second Floor

Space Available - 1,135 SF



2nd Floor Location

Photos



Located in the heart of the Salt Lake Valley at 4500 South 900 West, Sorenson Research Park offers immediate access to both I-15 and I-215. This dynamic development, minutes from the Salt Lake City International Airport, is situated on over 100 acres and is close to several retail amenities, hotels and two golf courses.

Aerial Map



Copyright © 2021 Colliers International.

Information herein has been obtained from sources deemed reliable, however its accuracy cannot be guaranteed. The user is required to conduct their own due diligence and verification.

Colliers International
6440 S Millrock Dr. | Suite 500
Salt Lake City, UT 84121
Main: +1 801 947 8300
colliers.com